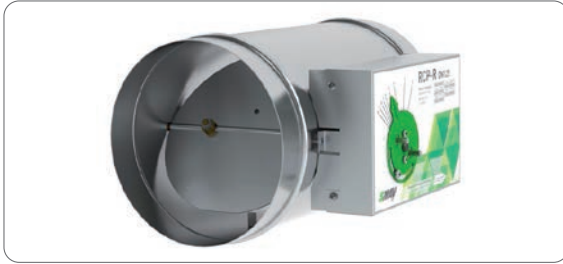


RCC



Description

- RCC:** circular CAV units
- casing in galvanised steel
 - galvanised steel adjustment blades with system to control the oscillations, stainless steel rotation shafts on special bearings
 - operating range from 50 to 500 Pa
 - velocity working range from 2 to 10 m/s
 - operating temperature between -20°C and +70°C
 - tolerance $\pm 10\%$ (up to 100 m³/h: ± 10 m³/h fixed)
 - horizontal or vertical assembly
 - optional recalibration on worksite

RCC...230: like RCC but with 230V actuator for operation with two flows

RCC...24: like RCC but with 24V actuator for operation with two flows

RCC...I: with insulated casing

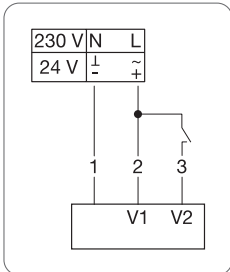
Accessories

- Plug-in sound attenuator L = 1000 mm

Assembly:

- install a straight duct section of at least 5xD upstream if connected with hammer release; if connected to rigid duct R min 1.5D

Electrical connections



Current		Connection no.			Func.
		1	2	3	
230V	Colour	Blue	Brown	White	
	Func.	N	L	L	V1 V2
24V	Colour	Black	Red	White	
	Func.	-	+	+	V1 V2

V1: minimum flow
V2: maximum flow

All prices are list prices for local market, for a quotation please contact us.

Price list

DN	RCC + UP	RCC I	RCC 24	RCC 230
100	93	212	297	304
125	91	212	294	301
160	93	218	297	304
200	103	239	308	315
250	117	267	336	331
315	126	290	346	342
400	133	312	354	350

UP: external gasket

Dimensions

DN	FLOWS (m ³ /h)		Pst min (Pa)	Pst max (Pa)	Φ d (mm)	L (mm)	LC (mm)
	min	max					
100	57	283	50	90	98	270	350
125	88	442	30	70	123	270	350
160	145	723	30	70	158	270	350
200	226	1130	30	70	198	270	350
250	353	1766	50	70	248	270	350
315	561	2804	50	70	313	270	350
400	904	4520	50	70	398	270	350

Δp min: operation from 50 Pa

RCC

